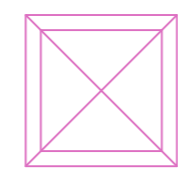


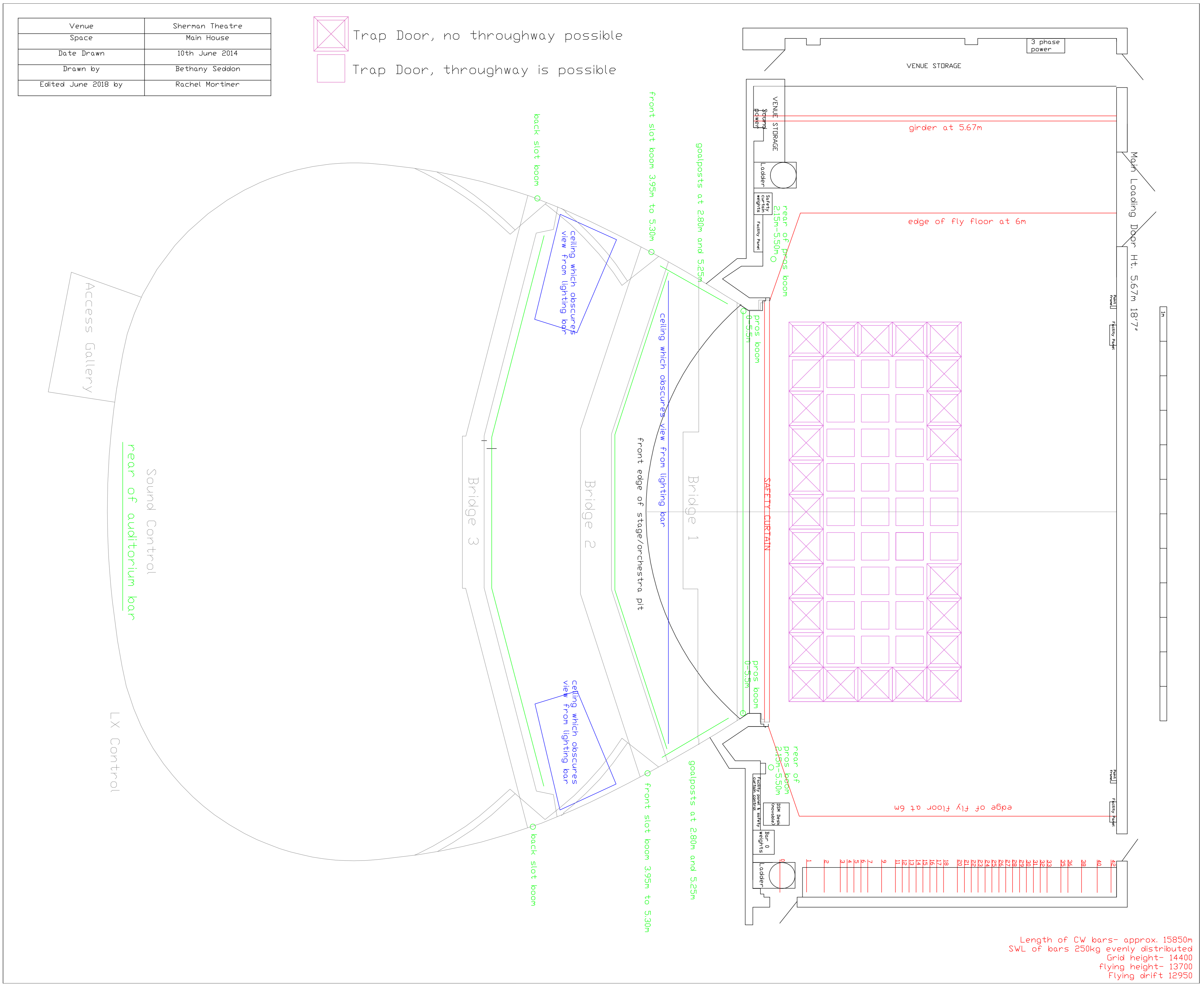
Venue	Sherman Theatre
Space	Main House
Date Drawn	10th June 2014
Drawn by	Bethany Seddon
Edited June 2018 by	Rachel Mortimer



Trap Door, no throughway possible



Trap Door, throughway is possible



Length of CW bars- approx. 15850m
 SWL of bars 250kg evenly distributed
 Grid height- 14400
 flying height- 13700
 Flying drift 12950