

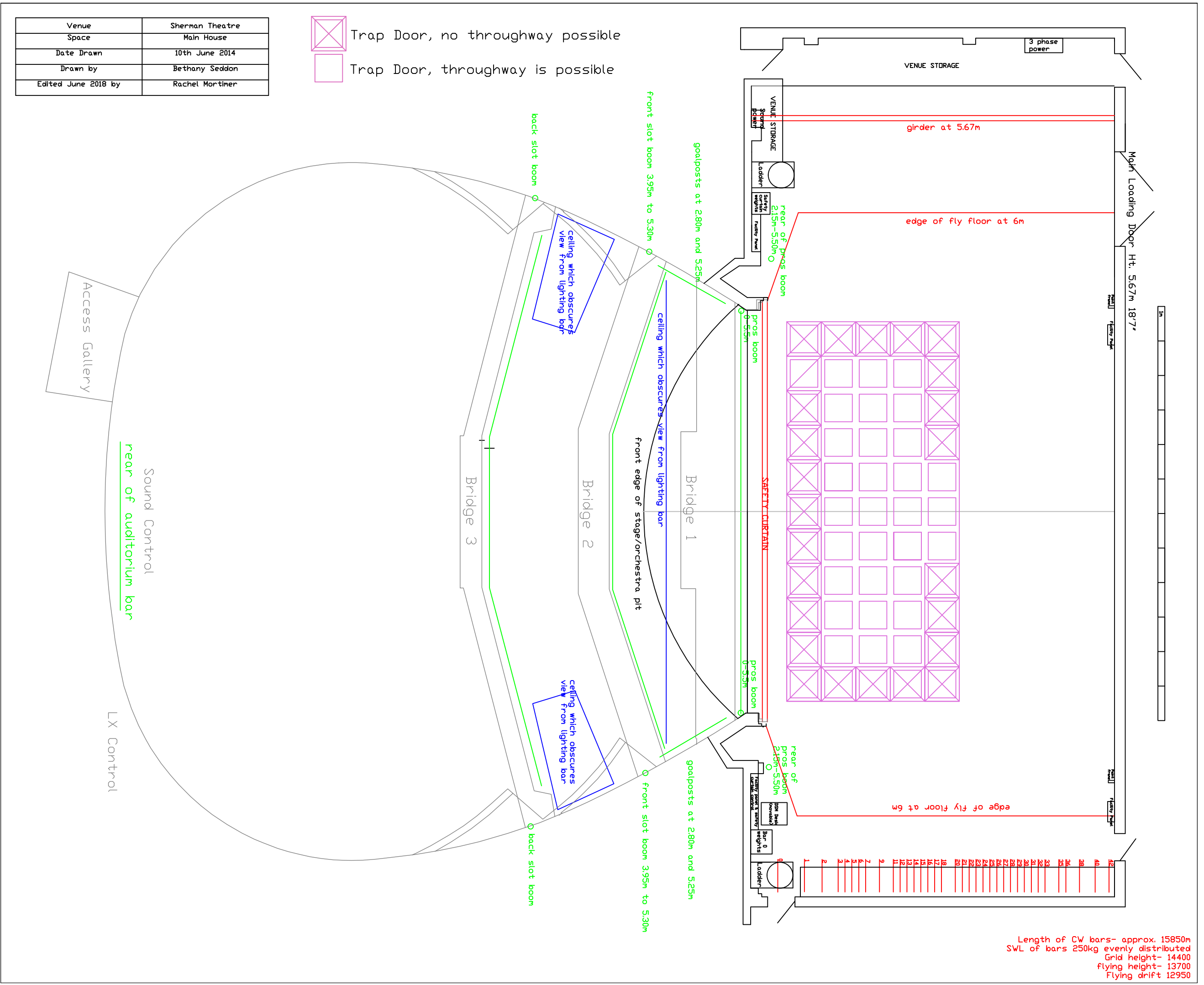


Venue	Sherman Theatre
Space	Main House
Date Drawn	10th June 2014
Drawn by	Bethany Seddon
Edited June 2018 by	Rachel Mortimer

 Trap Door, no throughway possible  
 Trap Door, throughway is possible



Length of CW bars- approx. 15850m  
 SWL of bars 250kg evenly distributed  
 Grid height- 14400  
 flying height- 13700  
 Flying drift 12950